

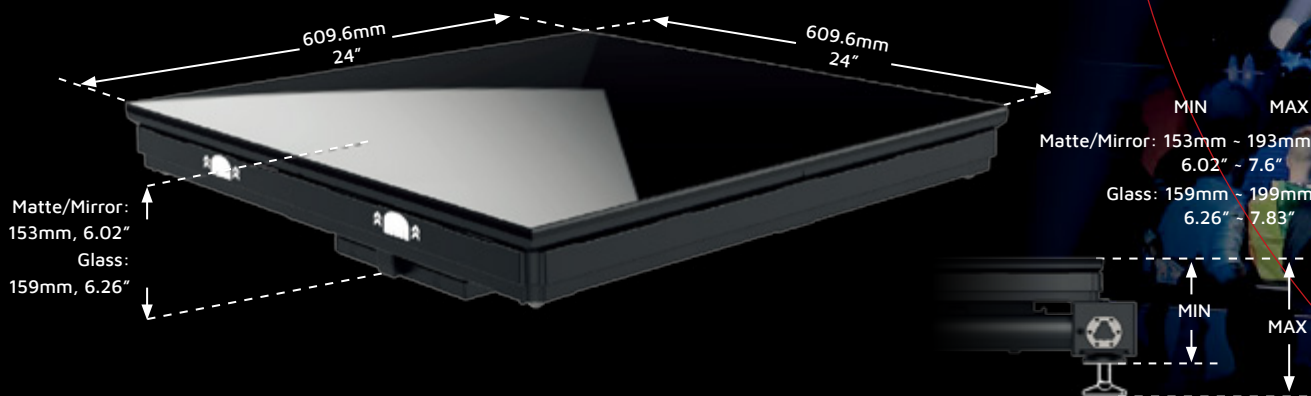
## Versatile LED panels for stylish floors and walls

Black Marble BM4 LED panels are designed to offer a stylish solution for LED floors and integrated walls. The finish of the top layer allows for high-end use with a chic and classy appearance. The ability to mix and match panels with different finishes make it suited for enhanced creative experience in floors, walls and multi-level stages or stairs.

### Specifications

Module	BM4 Glass, Mirror	BM4 Matte
Pixel Pitch	4.7625mm	4.7625mm
Max. Brightness Calibrated	up to 1,300nits	2,000nits
Panel Dimension	609.6 x 609.6 x 130mm 24" x 24" x 5.1"	609.6 x 609.6 x 130mm 24" x 24" x 5.1"
Panel Resolution (H x V)	128 x 128	128 x 128
Panel height incl.frame/feet	153-193mm	159-199mm
Weight Per Panel	21.65kg; 47.73lbs	16.0kg; 35.27lbs
Power Consumption Max/Average	280W / 140W	280W / 140W
BTU Max/Average	955 / 439	955 / 439
Transparency	Solid	Solid
Serviceability	Front	Front
LED Configuration	White SMD 3in1	White SMD 3in1
Viewing Angle Horizontal	140°	140°
Multiplexing	8	8
Refresh Rate	1920Hz	1920Hz
Gray Scale	16bit	16bit
Frame Material	Magnesium Alloy	Magnesium Alloy
Operational Temp / Humidity	-20° - 45°C, 10-90%RH -4° - 113°F, 10-90%RH	-20° - 45°C, 10-90%RH -4° - 113°F, 10-90%RH
Storage Temp / Humidity	-40° - 60°C, 10-90% RH -40° - 140°F, 10-90% RH	-40° - 60°C, 10-90% RH -40° - 140°F, 10-90% RH
IP Rating	IP65	IP65
Certifications	CE, ETL, FCC	CE, ETL, FCC

### Dimensions



## BLACK MARBLE BM4

Brilliant LED At Your Feet

Your Stage  
Our Passion

[www.roevisual.com](http://www.roevisual.com)

ROE Visual Co., Ltd. | ROE Visual US, Inc. | ROE Visual Europe BV  
roe@roevisual.com | usa@roevisual.com | europe@roevisual.com

IN- & OUTDOOR LED PANELS



## Even greater visuals with the perfect finish

With a 4mm pixel pitch the LED panels offer excellent visual qualities.



### Matte-finish

A non-reflective LED panel, ideal for broadcast and live events



### Deep black finish

A stylish glossy panel offering a true, deep black color, for a high-tech design look and feel

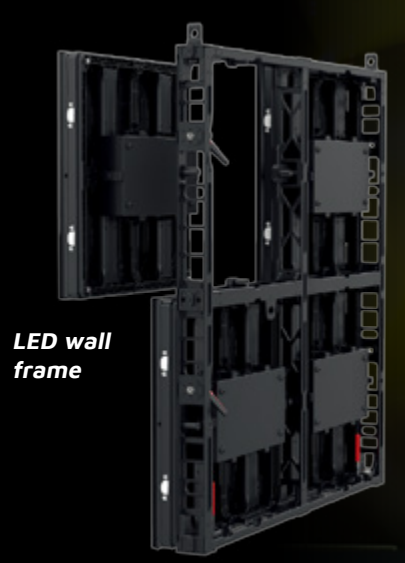


### Mirror finish

A trendy LED panel, offering a unique mirroring finish, ideal for retail or exhibition applications, offering the unexpected extra



LED floor frame



LED wall frame



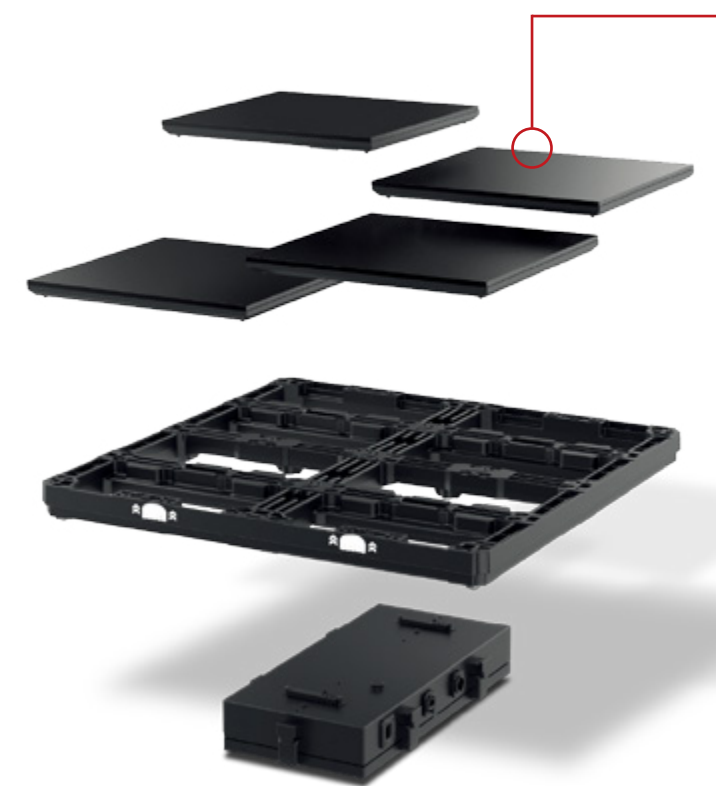
LED stair / multi-level frame

## Versatile system

Black Marble LED panels can be built as LED floor, LED wall, stairs and multi-level stages and integrate this all. This thought-tough system is very easy to install and enables users to apply their creative applications freely and enables the application of a variety of creative designs.

## Support Options

- Support Frame; guaranteeing a safe and sturdy floor support. The floor is designed to withstand a load of 1000kg/m<sup>2</sup>.
- Stair System; create multi-level floors, stairs and spectacular show elements. Based on the standard Support Frame, extra riser elements can be added. The Aluminum Stair System for Black Marble is a light-weight, easy to build system and can create various levels, lengths and sizes, up to a maximum of 3m. height.
- Wall System; you can create classy looking LED walls offering integration possibilities for retail and architectural applications. The special Aluminum system for Black Marble is a light-weight, easy to build system which can be either stacked or flown.



## Fast and Easy set-up

All support options are easy and fast to install, using a minimal number of tools, reducing assembly time and saving labor costs.



## Boundless creativity

Triangular panels; Ideal to make round LED floors or other creative shapes.

## Create visual illusions beyond your imagination



Top access for easy module maintenance.

IP 65 rating, outdoor use and wet cleaning to keep your floor in pristine condition, is easy.

Safety first, max. loading 1000kg/m<sup>2</sup>

Stairs and multi-level stages - the standard step height is 208mm

Safe Access - anti-slip surface on all LED panels

Magnetic Modules, easy module swapping

